



Array Management Platform (AMP)

D A T A S H E E T



AMP provides centralized monitoring, analysis, management and configuration for Array ADC and SSL VPN appliances in local or distributed data centers.



AMP (Array Management Platform) provides comprehensive monitoring and management of Array Networks APV/vAPV application delivery controllers and AG/vxAG secure access gateways, providing deep visibility into traffic patterns and user behavior, simplifying management and providing a central point of control.

Powered by the service-oriented and user centric AMP web user interface (WebUI), administrators can easily monitor, manage, configure and upgrade multiple Array Networks products from a single, central console.

AMP's analysis capabilities also enable administrators to collect, audit and analyze user behavior and server usage information to quickly spot trends that can impact performance and security



Highlights And Benefits

- Monitors and manages up to 100 Array Networks ADC or SSL VPN instances, whether running as dedicated hardware appliances or as virtual appliances (VAs) running in virtual environments
- Concurrent monitoring of all managed devices, added services and the AMP system for overall device and service status, allowing at-a-glance visualization of trends and performance issues
- Graphical and intuitive dashboard offers an at-a glance view of monitored devices, services, tasks and alerts
- Statistics on user accesses via ADC to Layer 3 and Layer 7 services, including user behavior logs on logins/logouts and session-related statistics such as visiting time, request method, status code, user agent and more.
- Supports device grouping to allow logical organization of managed devices
- Application and URL statistics for ADC traffic allows usage analysis as well as average server delay, request/response status and other information
- User and application statistics for SSL VPN users, including visiting time, method, agent and other data as well as visited applications, method, agent and other information
- Runs as a VA on CentOS in standard virtualized environments
- Alerts for managed devices based on thresholds, and historical alert view
- Provides single-click access to any managed device's virtual console link, allowing quick and easy access to the device's WebUI or Web Console
- Automatic or manual back-up of configurations from managed devices, with version control and roll-back if needed
- Stores software images locally and allows remote updating of a single device or an entire device group, streamlining the update process
- Supports batch processing for AG/vxAG SSL VPN appliances' common configurations, allowing role, ACL, VPN and custom configurations to be stored and distributed across multiple devices
- Asynchronous task management allows upgrades and configuration changes to run in the background, with status reporting and auto-restart if task is interrupted
- Compliance check function allows viewing of differences between selected backup file and target device's configuration
- Configuration templates can be created, edited and applied to one or more devices, saving time and ensuring consistency



Features



Comprehensive Monitoring

AMP provides real-time visibility into managed devices and their associated services, as well as AMP itself, with the ability to alert based upon thresholds. Device monitoring displays statistics such as network traffic, CPU usage, and memory usage. In addition, for managed AG/vxAG SSL VPN appliances, AMP can display the number of users currently logged in as well as login time, device type and version, and login method.

Service monitoring displays the real-time statistics of associated services on the devices, including server load balancing and SSL VPN to allow quick identification of performance and security issues such as abnormal server delays or request/response statuses. User, session, application and URL statistics allow usage analysis to fine-tune resources and quickly spot unauthorized usage and unsecure protocols.

Through the Alerts module, administrators can set thresholds for CPU, memory and disk usage on managed devices. Previous alerts are stored in a Historical Alerts page for future reference.



Log Audit and Statistics Analysis

For AG/vxAG SSL VPNs, AMP provides extensive logging of user and server statistics. User behavior can be audited based on logs of login/logout time, endpoint information, method, sent/received traffic, and session duration.

AMP also logs information regarding user sessions, including Layer-3 accesses with time, source IP, server IP, port, protocol type and sent/received traffic. For Layer-7 accesses, the time, server, URL and status are recorded. User and system logs can be used for forensic support and root cause analysis.

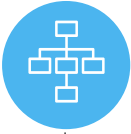


Simplified and Efficient Management

AMP streamlines and simplifies management, configuration, updating and monitoring of up to 100 combined Array APV Series or AG Series dedicated or virtual appliances in local or distributed data centers. In addition, license management allows viewing and application of licenses to individual managed devices.

The AMP dashboard is designed with IT administrators in mind, and features graphical representations of system statistics for easy visualization. In addition, the dashboard provides centralized access to AMP management operations and toolkits, as well as to managed devices for quick access to their respective WebUIs or Web Consoles.

Hardware-based appliances, VAs or a mixture of appliance types can be logically organized into groups for ease of management, monitoring, configuration and updating.



Configure and Update Managed Devices with Ease



As devices are added to AMP, their respective configurations are automatically backed up and stored in local memory. In addition, configuration files can be manually backed up at any time, and multiple configurations for a given device can be stored in a version or history trail.

Configuration templates can be created and edited from stored configuration files. A configuration template can then be applied to one or more devices. For AG/vxAG SSL VPN dedicated appliances or VAs, AMP supports batch processing of role, ACL, VPN and custom configurations to be applied to one or more SSL VPN services for consistent policy across devices.

AMP also offers software image management with a local store of up to 15 images. Once images have been stored, with just a few clicks in the dashboard administrators can upgrade a single device or an entire device group. Images can also be deleted when they become outdated. Managed devices' licenses can also be viewed and imported.

AMP also offers software image management with a local store of up to 15 images. Once images have been stored, with just a few clicks in the dashboard administrators can upgrade a single device or an entire device group. Images can also be deleted when they become outdated. Managed devices' licenses can also be viewed and imported.

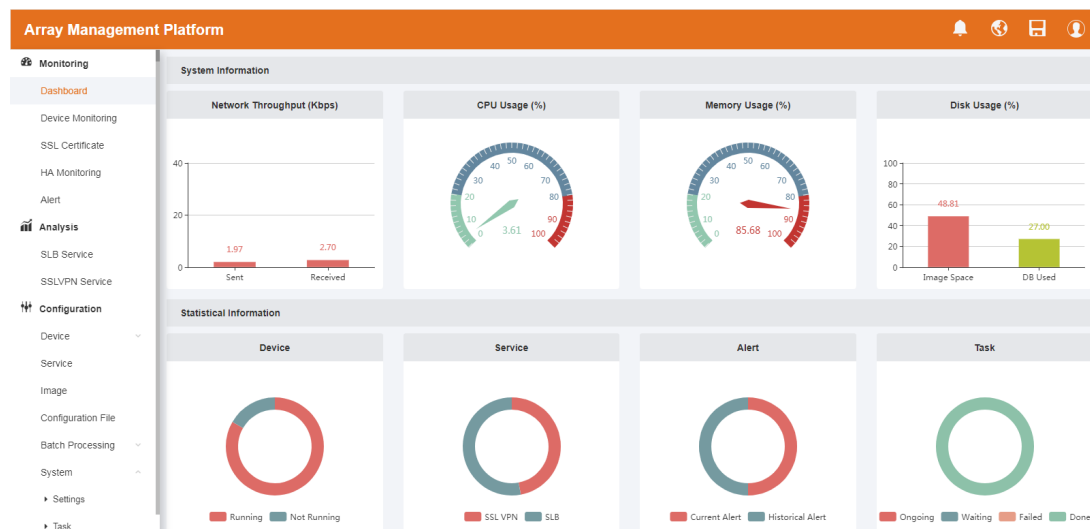


Task Management

Many operations that administrators perform through AMP, such as software upgrades and application of configuration templates, are performed in asynchronous mode and are completed in the background by AMP. A task management tab provides done, failed, waiting and ongoing statuses on all scheduled tasks.

If AMP is rebooted for any reason, the system will check for unfinished tasks and if any exist, it will continue processing the tasks to completion.

**AMP
Dashboard:**





Device Management

Array Management Platform									
<div>Monitoring</div> <div>Dashboard</div> <div>Device Monitoring</div> <div>SSL Certificate</div> <div>HA Monitoring</div> <div>Alert</div> <div>Analysis</div> <div>SLB Service</div> <div>SSLVPN Service</div> <div>Configuration</div> <div>Device</div> <div>Device Group</div> <div>Service</div> <div>Image</div> <div>Configuration File</div> <div>Batch Processing</div> <div>System</div>	Managed Devices								
	+ 4 Displayed								
	No.	Name	Type	Model	IP	Port	Location	Managed	Action
	Search by Name		All	Search by Model	Search by IP	Search by Port	Search by Location		
	1	192.168.4.71	APV	Array vAPV	192.168.4.71	9997	BeLing	✓	🔍 🔄 🗑️ 📄
	2	10.4.135.10	AG	Array vxAG	10.6.0.4	9997	Beijing	✓	🔍 🔄 🗑️ 📄
	3	10.8.11.34	APV	Array vAPV	10.4.135.10	9997	Beijing	✓	🔍 🔄 🗑️ 📄
	4	10.8.11.34	AG	Array vxAG	10.8.11.34	9997		✓	🔍 🔄 🗑️ 📄
	5	10.8.11.35	AG	Array vxAG	10.8.11.35	9997		✓	🔍 🔄 🗑️ 📄
	6	10.4.134.81	APV	Array vAPV	10.4.134.81	9997	BeLing	✓	🔍 🔄 🗑️ 📄
	7	10.4.72.2	APV	Array vAPV	10.4.72.2	9997		✓	🔍 🔄 🗑️ 📄
	8	10.4.4.100	AG	Array AG1500	10.4.4.100	9997		✓	🔍 🔄 🗑️ 📄
	9	10.4.71.37	AG	Array vxAG	10.4.71.37	9997		✓	🔍 🔄 🗑️ 📄
	10	10.4.66.1	AG	Array vxAG	10.4.66.1	9997		✓	🔍 🔄 🗑️ 📄

Activity Monitoring

Array Management Platform									
<div>Monitoring</div> <div>Dashboard</div> <div>Device Monitoring</div> <div>SSL Certificate</div> <div>HA Monitoring</div> <div>Alert</div> <div>Analysis</div> <div>SLB Service</div> <div>SSLVPN Service</div> <div>Configuration</div> <div>Device</div> <div>Device Group</div> <div>Service</div> <div>Image</div> <div>Configuration File</div> <div>Batch Processing</div> <div>System</div>	Users / jiling								
	User Login And Logout Logs								
	Time		2018-03-12 09:15:11		2018-05-30 09:19:11		Search		
	No.	Login Time	Endpoint Information		Method	Sent / Received		Logout Time	Duration
			Search by Device		Search by Method				
	1	2018-04-09 05:41:23	Mozilla/5.0 (Windows NT 10.0; WOW64; Trident/7.0; Touch; rv:11.0) like Gecko		ad_method	5.56MB/0.21MB		2018-04-09 05:42:45	1m22s
	2	2018-04-08 11:18:37	Mozilla/5.0 (Windows NT 6.1; Win64; x64) AppleWebKit/537.36 (KHTML, like Gecko) Chrome/61.0.3163.79 Safari/537.36		ad_method	0B/0B		2018-04-08 11:18:41	4s
	3	2018-04-08 11:13:16	Mozilla/5.0 (Windows NT 6.1; Win64; x64) AppleWebKit/537.36 (KHTML, like Gecko) Chrome/61.0.3163.79 Safari/537.36		ad_method	0.33KB/0B		2018-04-08 12:45:32	1h32m16s
	4	2018-04-08 11:10:26	Mozilla/5.0 (Windows NT 6.1; Win64; x64) AppleWebKit/537.36 (KHTML, like Gecko) Chrome/61.0.3163.79 Safari/537.36		ad_method	0B/0B		2018-04-08 11:15:35	5m9s
	5	2018-04-06 08:17:06	Mozilla/5.0 (Windows NT 6.1; Win64; x64) AppleWebKit/537.36 (KHTML, like Gecko) Chrome/56.0.2924.87 Safari/537.36		ad_method	9.09MB/0.78MB		2018-04-06 09:45:22	1h28m16s
	6	2018-04-06 08:15:11			ad_method	0B/0B		2018-04-06 09:15:17	1h6s
	7	2018-04-06 08:14:44			ad_method	0B/0B		2018-04-06 09:14:47	1h3s
	8	2018-04-05 17:52:41			ad_method	7.34MB/0.56MB		2018-04-05 19:45:22	1h52m41s
	9	2018-04-04 23:32:49			ad_method	3.32MB/0.10MB		2018-04-04 23:33:31	42s
	10	2018-04-04 21:18:41			ad_method	28.99MB/2.79MB		2018-04-05 00:09:38	2h50m57s
	11	2018-04-04 11:38:37			ad_method	2.55MB/0.16MB		2018-04-04 12:43:24	1h4m47s
	12	2018-04-04 06:04:39			ad_method	2.03MB/0.14MB		2018-04-04 07:43:24	1h38m45s

Service Monitoring

Array Management Platform									
<div>Monitoring</div> <div>Dashboard</div> <div>Device Monitoring</div> <div>SSL Certificate</div> <div>HA Monitoring</div> <div>Alert</div> <div>Analysis</div> <div>SLB Service</div> <div>SSLVPN Service</div> <div>Configuration</div> <div>Device</div> <div>Device Group</div> <div>Service</div> <div>Image</div> <div>Configuration File</div> <div>Batch Processing</div> <div>System</div>	SLB Service								
	No.	Service Name	Service List	Service Type	Service IP	Service Port	Status	Bytes In(MBytes)	Bytes Out(MBytes)
	Search by Service No.		Search by Service Li	Search by Service Ty	Search by Service IP				
	1	192.168.4.71-vs1	vs1	L2IP	1.1.1.12		✓		
	2	10.4.72.2-http_vs1	http_vs1	HTTP	10.4.72.4	80	✓	48991266	116573542
	3	10.4.72.2-tcp_vs1	tcp_vs1	TCP	10.4.72.6	80	✓	380987	9786404
	4	10.4.72.2-vs1	vs1	HTTP	10.4.72.12	80	✓	27953	208956
	5	10.4.72.2-https	https	HTTPS	10.4.134.91	443	✓	0	0
	6	10.4.72.2-http_vs7	http_vs7	HTTP	10.4.72.5	80	✓	23950	482482
	7	10.4.72.2-http_vs2	http_vs2	HTTP	10.4.72.7	80	✓	13673	131606



AMP Series Specifications

Supported Hypervisors (64-bit only)

Runs on CentOS on any hypervisor

Virtual Machine Requirements

Requires Minimum:
4 Virtual CPUs
1 Virtual Network Adapter
4GB RAM
64GB Disk

Free Trial

Reach out to us for a free 30-day AMP trial today.



1371 McCarthy Blvd.
Milpitas, CA 95035



www.arraynetworks.com



+1-866-MY-ARRAY
+1 408-240-8700