

APV9650

D A T A S H E E T



Application Delivery Controller

The Array Networks APV9650 is the world's highest performing application delivery controller appliance, capable of 60Gbps throughput and 20 million concurrent connections on a single system.

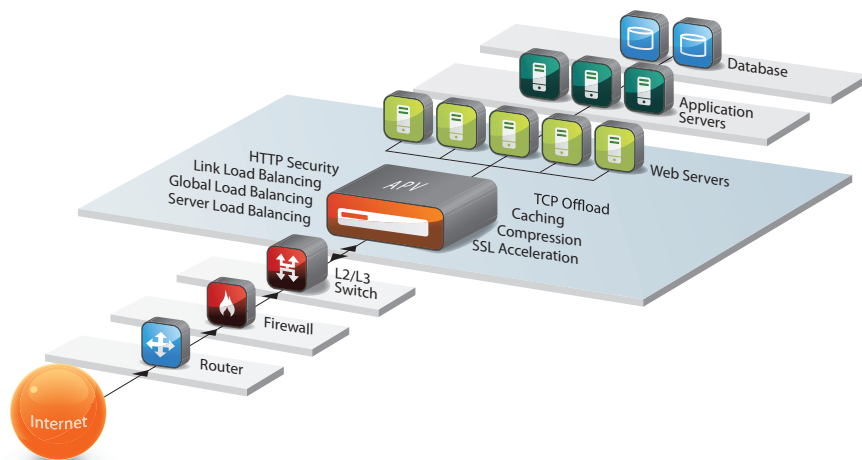
Powered by Array SpeedCore™, the APV9650 leverages state-of-the-art multi-core processing, hardware acceleration, energy-efficient components and 10 Gigabit Ethernet connectivity to create an integrated appliance purpose-built for increasing application availability, performance and security while decreasing cost and complexity in the data center. Able to simultaneously sustain industry-leading performance for traffic management, security and acceleration in global enterprise and service provider environments, the APV9650 delivers feature-functionality and economies-of-scale ideal for data center modernization, virtualization, cloud services and emerging IP data services.

Highlights & Benefits

- Optimized multi-processor, multi-core, parallel architecture supporting 60Gbps throughput and 20 million concurrent connections
- Highest performing application delivery controller appliance on the market, ideal for global enterprises and service providers and private and public clouds
- Simultaneously supports Array AppVelocity load balancing and acceleration, AppVelocity-S SSL acceleration and NetVelocity link load balancing products
- Integrates local, link and global load balancing, SSL acceleration, caching, TCP multiplexing, compression, IPv6, virtualization integration and a stateful packet inspection firewall
- 99.999% application availability, over 5X application acceleration and multi-layer application security
- Industry-leading hardware SSL for offloading 1024 and 2048-bit encryption from servers
- Hardware-accelerated adaptive compression for bandwidth and application optimization
- RAM-based in-memory caching
- Gigabit and 10 Gigabit Ethernet over copper, SFP fiber and SFP+ fiber
- Compact, 2RU appliance that consumes 35% less energy than alternative products for data center environments where space and power are at a premium
- Redundant power for business-critical application environments requiring 24/7 application uptime
- N+1 clustering to 32 appliances for redundancy and industry-leading on-demand scalability
- Common SpeedCore™ platform for unified management and plug-and-play platform upgrades



hardware



	App Velocity	App Velocity-S	Net Velocity
WebWall	●	●	●
Clustering	●	●	●
Fast Failover	●	●	●
Multi-Language WebUI	●	●	●
tProxy	●	●	●
L4 SLB	●	●	●
L7 SLB	●	●	○
Caching	●	●	○
Compression (SW)	●	●	○
SSL	N/A	●	N/A
LLB	○	○	●
Traffic Shaping	○	○	●
Dynamic Route	○	○	●
Compression (HW)	○	○	○
IPv6 Support	○	○	○
GSLB	○	○	○

● Included ○ Optional N/A Not Available

	Appliance Specifications
Throughput	60Gbps
Maximum Connections	20M
Layer 7 RPS	6.4M
Memory	32 GB
10GigE Fiber Ports (SPF+)	8 XF SR Included
Clustering	32 Nodes
Power Supply	Dual
Power Consumption	289W
Input Voltage	90-264VAC, 8.5A; 47-63 Hz, ATX Auto-Switching
Standards	10/100/1000 Base-TX (GbE), 1000 Base-SX/LX/ZX, 10 GigE, 10 Gig XF SR/LR, IP, SSH, HTTP 1.0/1.1, SSL, SNMP, RS232
Management	SSH CLI, Direct Console DB9 CLI, SNMP, Single Console per Cluster, XML-RPC, Out of Band Management - RJ45
Dimensions	2U: 17" W x 22.5" D x 3.5" H
Weight	28 lbs
Environmental	Operating Temperature: 0° to 45°C, Humidity: 0% to 90%, Non-condensing
Regulatory Compliance	IEC 60950-1, CSA 60950-1, EN 60950-1, ICES-003, EN 55024, CISPR 22, AS/NZS 3548, FCC, 47FR part 15 Class A, VCCI-A
Safety	CSA, C/US, CE

